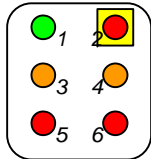
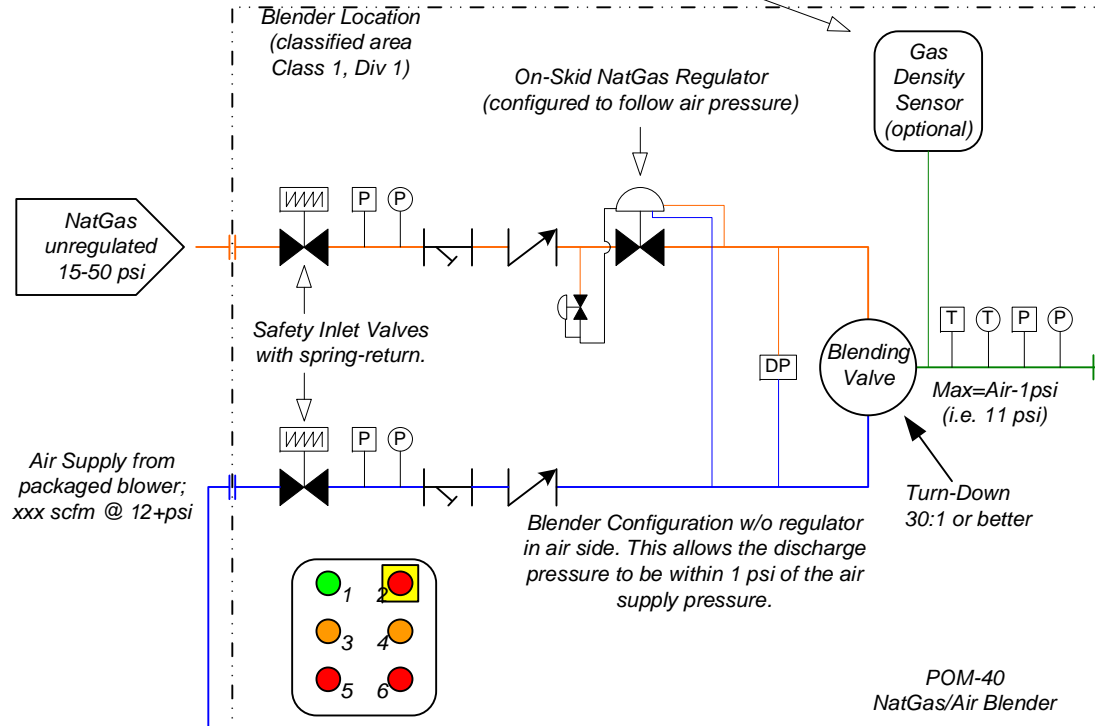


All electrical installations and components in blender area are Class 1, Div 1, Group D

Available Option:  
Gas Density Monitor, skid-mounted; measures NatGas/Air MixGas properties and displays Calorific Value, Wobbe Index, and Specific Gravity of MixGas at Operator Interface in Master Control Panel.



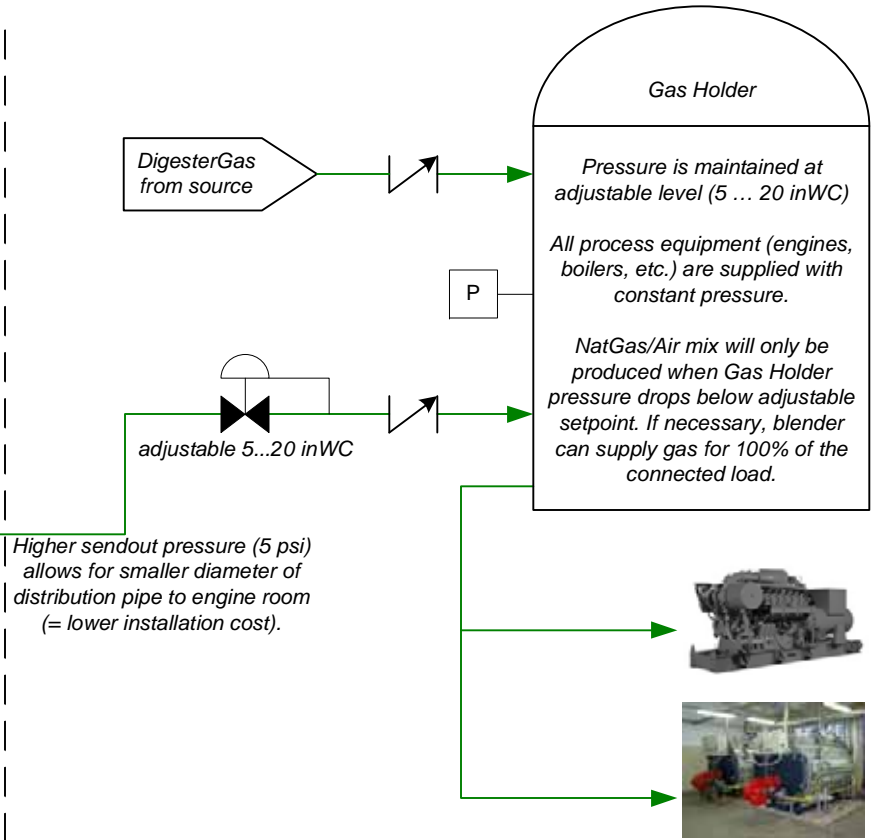
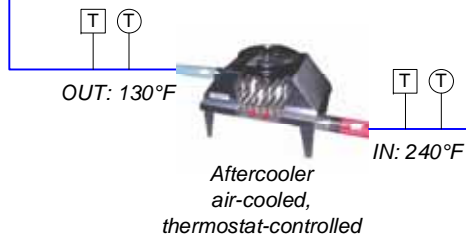
- Skid-Mounted Control Panel
- 1 - Control Power ON/OFF
  - 2 - ESD Mushroom Button
  - 3 - Inlet Valves Open/Close
  - 4 - Blender Start/Stop
  - 5 - Alarm Silence
  - 6 - Alarm Reset

NOTE:  
Blender can be operated through push buttons at local Start/Stop Station, or through the touch screen in the Master Control Panel.

- P** Pressure Transmitter
- Ⓟ** Pressure Gauge
- T** Temperature Transmitter
- Ⓣ** Temperature Gauge

Blender Location will be defined as Classified Area (Indoor or Outdoor)

Non-Classified Outdoor Location



Packaged Blower energy-saving VSD Drive available as Option



Operator Interface with Touch Screen

Master Control Panel

NOTE:  
Remote access for monitoring and control via Ethernet is standard. UL 508a stamp for panel available.

#	DATE	REVISION DESCRIPTION	DRAWN	APPRV'D
		<b>Alternate Energy Systems, Inc.</b>		
	DATE: 14-July-10	SCALE: NTS	DRAWN BY: WHD	APPROVED BY: n/a
	TITLE: DigesterGas Backup/Augmentation System - GasHolder Example			
	REVISION NUMBER: Revision # 0	DRAWING FILE: DigesterGas Replacement Blender Block Diagram.vsd		